



ENVIRONMENTAL IMPACT REPORT ADDENDUM

JACOBS HALL - JACOBS INSTITUTE FOR DESIGN INNOVATION

UC BERKELEY, COLLEGE OF ENGINEERING
23 DECEMBER, 2013



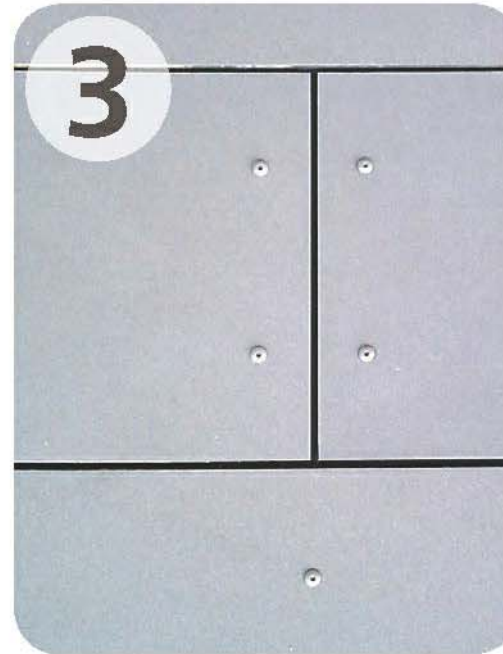
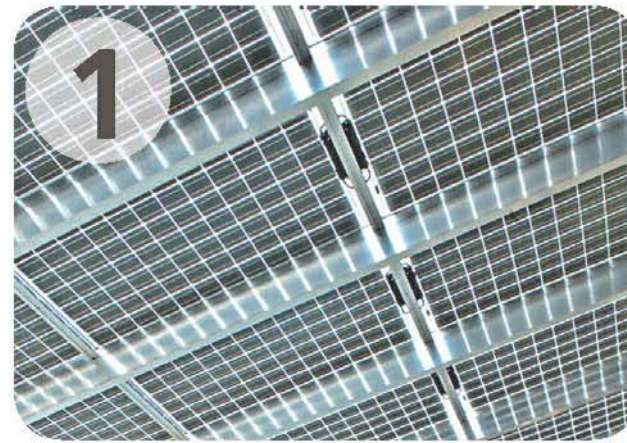








- 1 HIGH ROOF BIFACIAL PHOTOVOLTAIC ARRAY
- 2 PAINTED METAL ACCENT
- 3 SWISS PEARL FIBER CEMENT PANEL
- 4 CLEAR ANODIZED ALUMUNIM WINDOWS
- 5 ALUMINUM SOLAR CONTROL
- 6 STAINLESS STEEL MESH GUARDRAIL
- 7 CNC ROUTED PERFORATED PLYWOOD
- 8 POLISHED + SEALED CONCRETE



EDGE OF NEW SIDEWALK
 POURED IN PLACE CONCRETE SIDEWALK
 CONCRETE SEAT WALLS
 EXISTING TRENCH DRAIN TO REMAIN
 CONCRETE PLANTER W/ SEAT WALL
 STEEL PLANTER
 CAST IN PLACE CONCRETE PAVEMENT
 EXISTING PLANTER TO REMAIN



TREE PIT W/ DECOMPOSED GRANITE
 EDGE OF NEW SIDEWALK
 (E) CAST IN PLACE CONCRETE SIDEWALK
 (N) CAST IN PLACE CONCRETE PAVING
 STAIRS BY ARCHITECT
 FLOWTHROUGH PLANTERS



C.I.P. CONCRETE PAVING- CHARCOAL



CONCRETE WALLS - BOARD FORM FINISH



DECOMPOSED GRANITE - CANYON QUARRY FINES



STEEL PLANTER - TRICORN BLACK



EXISTING FACADE - SODA HALL



PLANT OPTIONS - STEEL PLANTER



PLANT OPTIONS - FLOW THROUGH PLANTERS



ACER RUBRUM

ULMUS 'FRONTIER'

QUERCUS ROBUR 'CRIMSON SPIRE'

BETULA JACQUEMONTII



CORNUS STOLONIFERA

POLYPODIUM CALIFORNICUM

CAREX DIVULSA

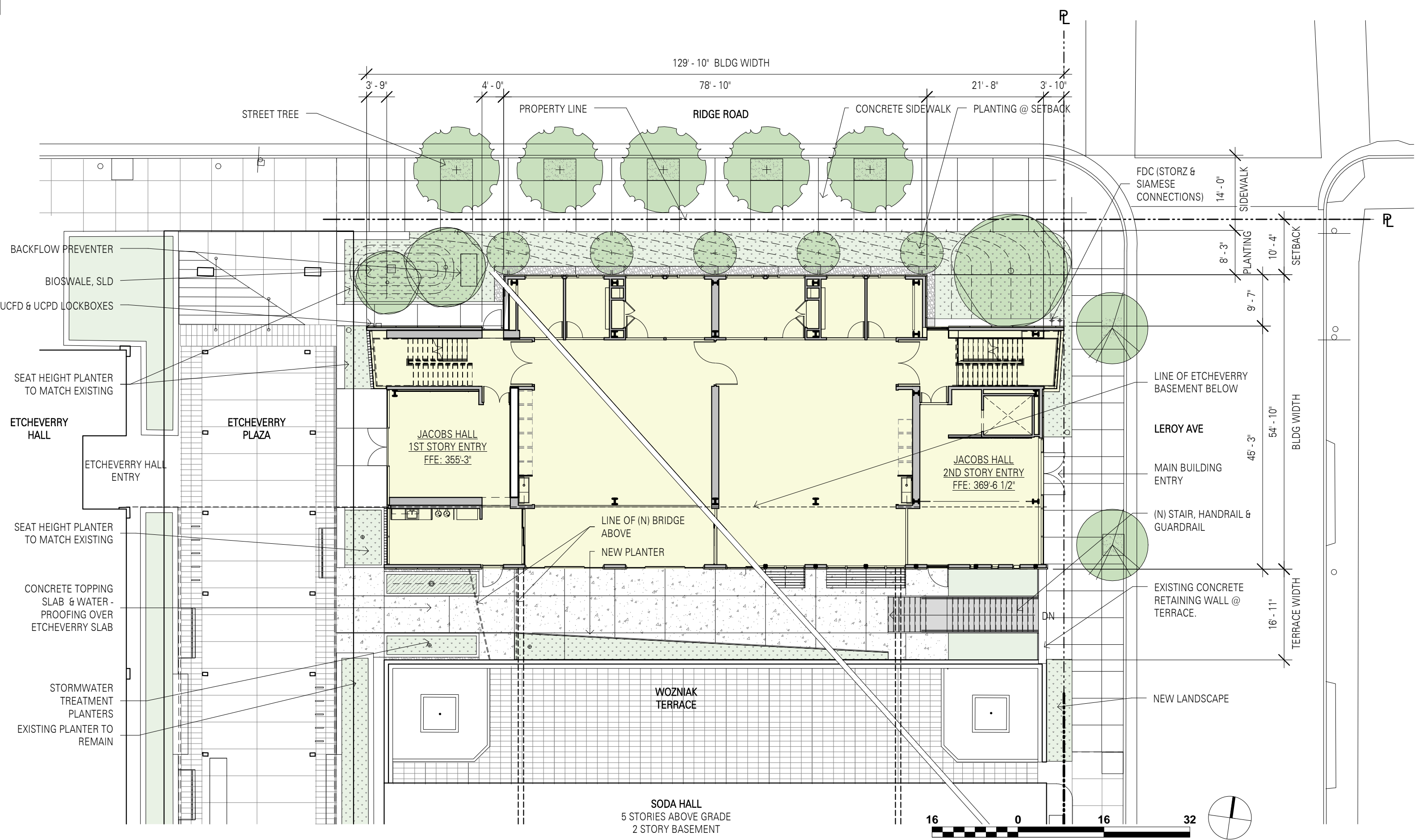
(N) STREET TREES - RED MAPLE

COLUMNAR TREES

(N) REDWOOD TREES

FLOWTHROUGH PLANTERS

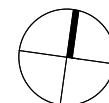
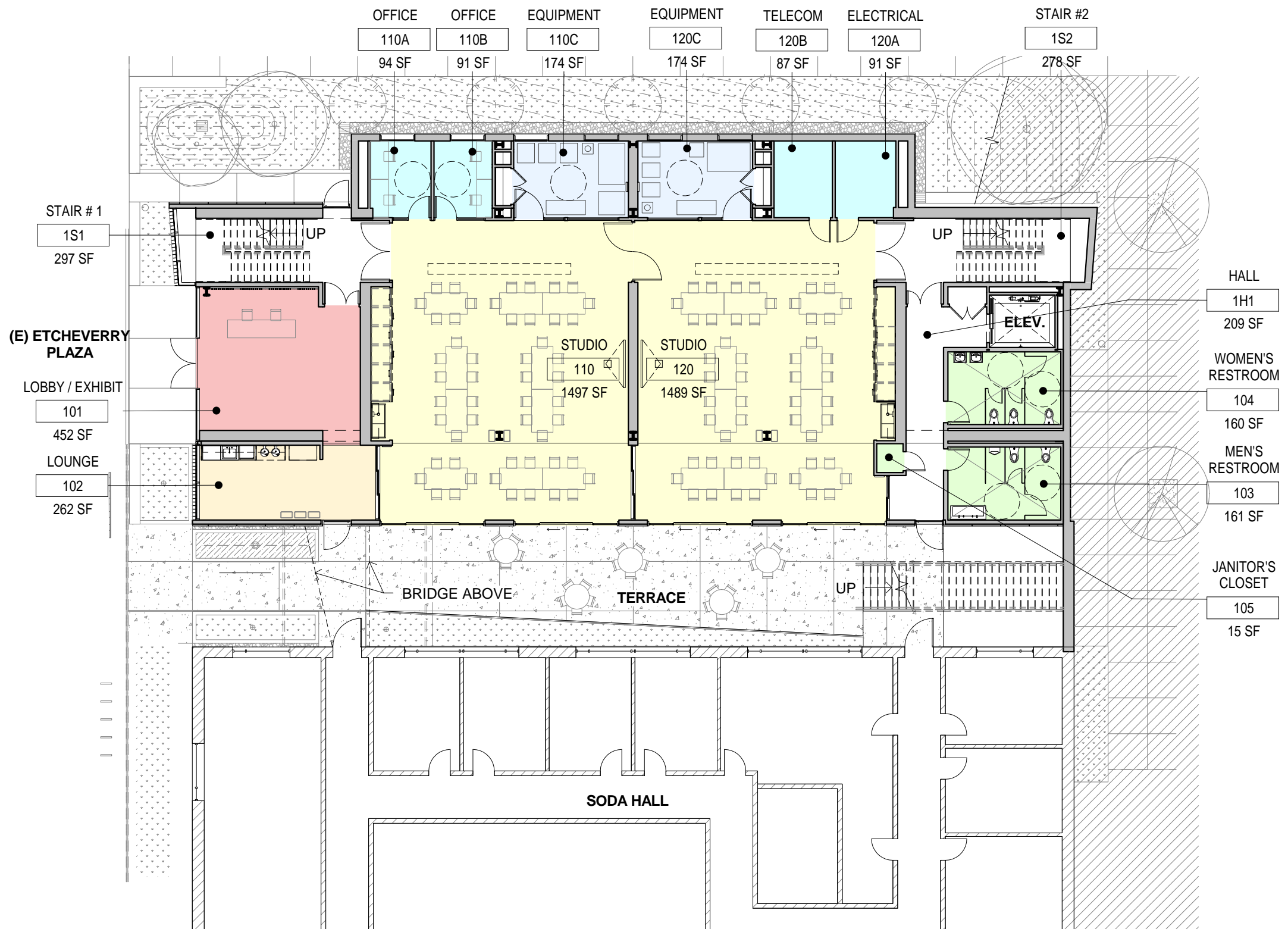




RIDGE ROAD

Room Legend

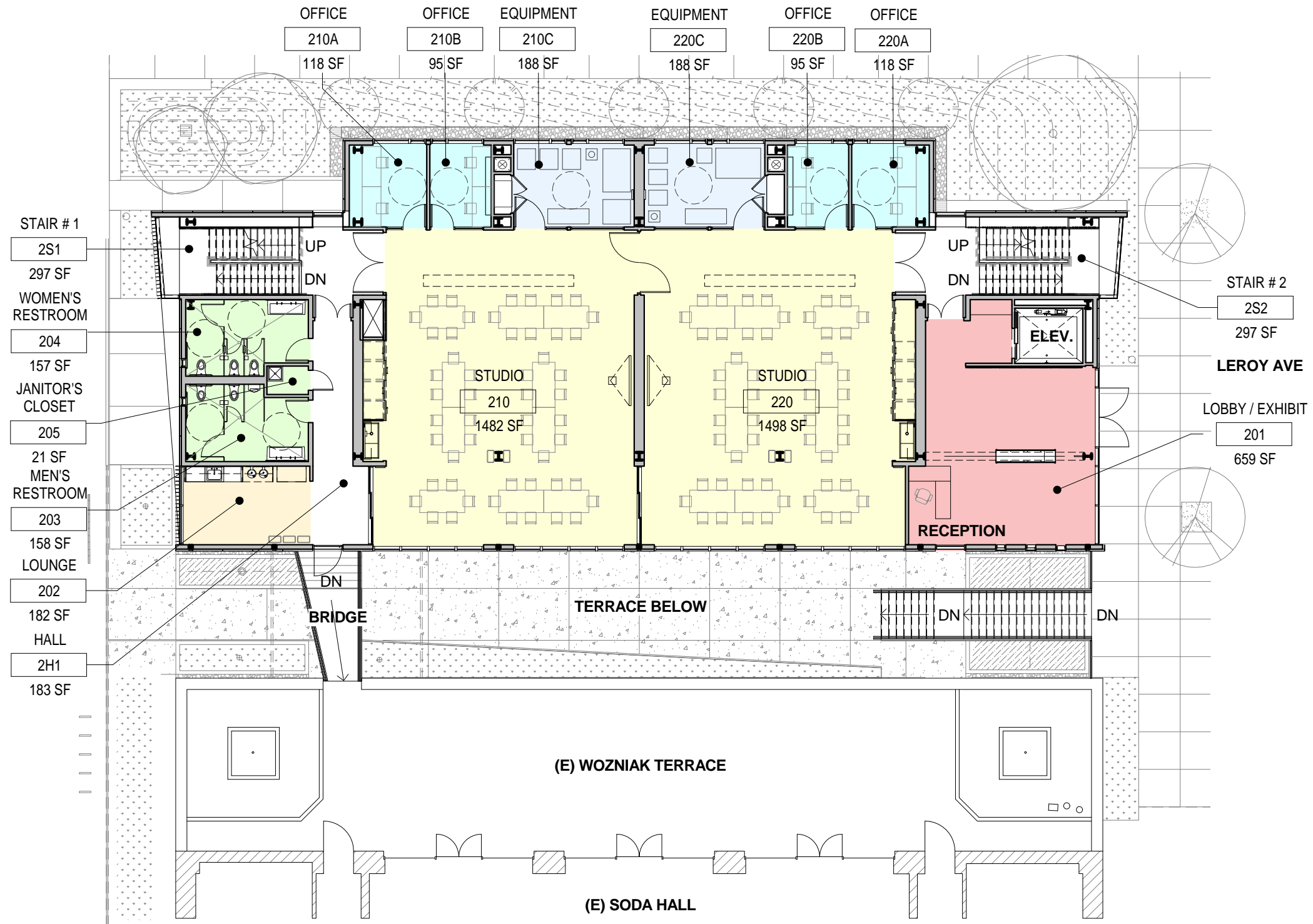
- LOUNGE
- STUDIO
- LOBBY / EXHIBIT
- EQUIPMENT
- OFFICE
- ELECTRICAL
- TELECOM
- WOMEN'S RESTROOM
- MEN'S RESTROOM
- JANITOR'S CLOSET
- ELEVATOR CONTROL CLOSET
- HALL
- STAIR #2
- STAIR # 1
- TERRACE



RIDGE ROAD

Room Legend

- LOUNGE
- STUDIO
- LOBBY / EXHIBIT
- EQUIPMENT
- OFFICE
- WOMEN'S RESTROOM
- MEN'S RESTROOM
- JANITOR'S CLOSET
- HALL
- STAIR # 1
- STAIR # 2



Room Legend

- LOUNGE
- STUDIO
- MEETING
- EQUIPMENT
- WOMEN'S RESTROOM
- MEN'S RESTROOM
- JANITOR'S CLOSET
- HALL
- STAIR #1
- STAIR #2

